

TOOLKIT

Designing and managing international relations, educational projects and mobility schemes in Asian Universities

Erasmus+ KA102



Yangon University of Economics

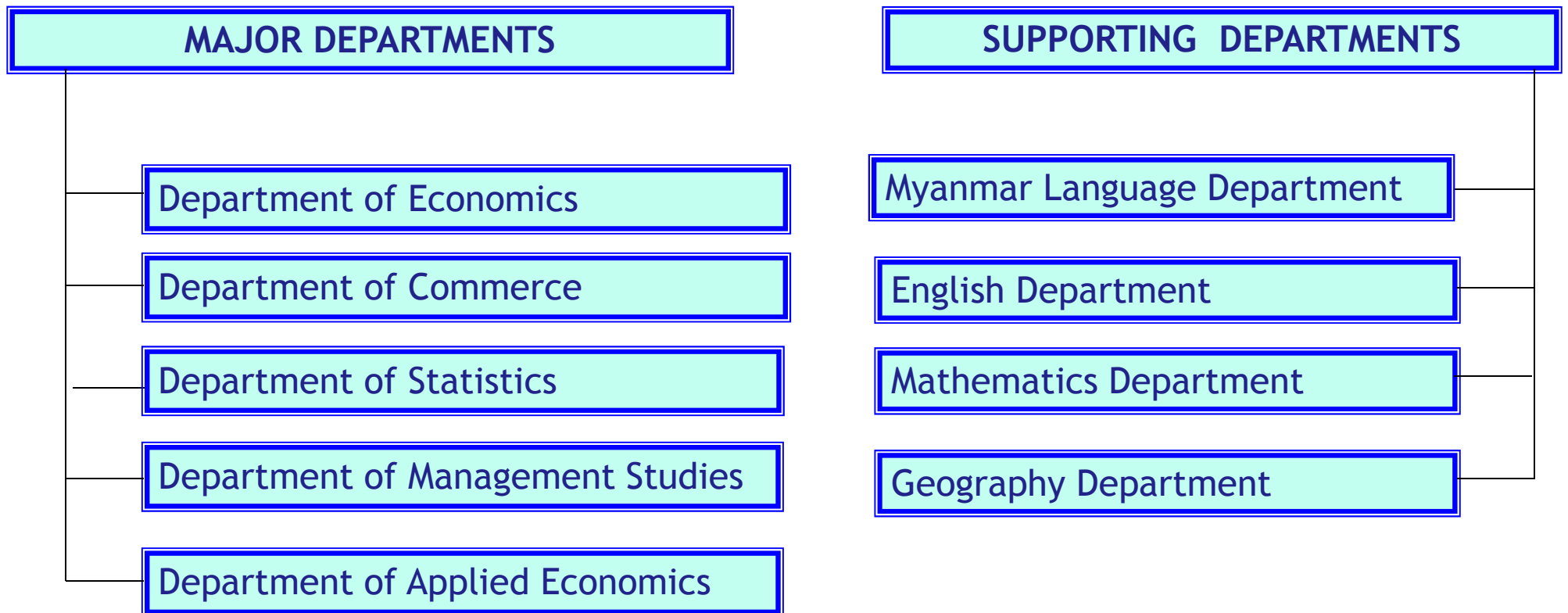
Yangon University of Economics

- Originated as Department of Economics under the University of Rangoon (Yangon) in 1924
- Established as Yangon Institute of Economics in 1964
 - @ The Corner of Pyay Road & Inya Road, Kamayut Township, Yangon 10041, Myanmar
- Four Campuses:
 - 1) Kamayut Campus
 - 2) Ywa Thar Gyi Campus
 - 3) Hlaing Campus
 - 4) Padamyia Campus



Yangon University of Economics

- Academic Department: **Five** major departments and **FOUR** supporting departments



Yangon University of Economics

ADMINISTRATIVE STAFFS

Rector	:	1
Pro Rector	:	1
Admin officer	:	10
Admin Staff	:	179
Total (Admin):		191

FACULTY MEMBERS

Professors	:	18
Associate Professors:		20
Lecturers	:	104
Assistant Lecturers	:	53
Tutors	:	90
Total (Faculty):		285

STUDENT POPULATION (2018-2019)

Undergraduate	:	4449
Honors & Qualifying	:	162
Master	:	1680
Diploma	:	83
PhD	:	94
Total	:	6468

Yangon University of Economics

- (9) Bachelor Programs
 - B.Com, BBA, B.Act, B.Econ (Stats), B.Econ (Eco), BPA, BDev.S, BPS, BBM
- (10) Master Programs
 - M.Com, M.Act, M.Econ (Stats), M.Econ (Eco), MBA, MPA, MDev.S, MBF, MPS, MAS
- (4) Executive Master Programs
 - EMBA, EMPA, EMDev.S, EMBF
- (3) Ph.D Programs
 - Ph.D (Economics), Ph.D (Commerce), Ph.D (Statistics)
- (7) Post-graduate Diploma Programs
 - DMA, DES, DS, DEM, DDS, DRS, DIM



International Profile: Facts & Figures

- Number of International MoU: 18

Sr. No.	Country	MoU
1	China	Agreement on Collaboration between YIE & Yunnan University of Finance & Economics (YUFE)
2	UNESCO	Partnership Agreement on Implementation of Centre of Excellence for Business Skills Development between YIE & UNESCO
3	Japan	MoA on Sumitomo Corporation Scholarship
4	Japan	Agreement of Cooperation between YIE & Ritsumeikan Asia Pacific University
5	Japan	MoU between Graduate School of International Management at International University of Japan (IUJ) and Department of Management Studies at YIE
6	Thailand	Agreement between YIE and Assumption University of Thailand
7	Thailand	MoU Between Chiang Mai University and YUE
8	Norway	MoU between Norwegian University of Science and Technology and YUE for Knowledge Development
9	Germany	MoU Joint revision and development of education and training activities targeting Myanmar's financial and banking between GIZ Project: Financial Sector Development in Myanmar and YIE

International Profile: Facts & Figures

► Number of International MoU: 18

Sr. No.	Country	MoU
10	S. Korea	Agreement of Cooperation between YUE and KOREA MYANMAR Research Association
11	United Kingdom	MoU between YUE and Association of Chartered Certified Accountants (ACCA)
12	Japan	MoA on Charitable Trust MIZUHO ASIAN Fund and YUE
13	Singapore	MoU between United Overseas Bank (UOB) and YUE
14	Japan	Agreement on Academic Cooperation between YUE and Teikyo University
15	Japan	MoU between AEON 1% Club Foundation and YUE
16	United Kingdom	MoU between YUE and Chartered Institute of Management Accountants (CIMA)
17	Germany	MoU between YUE and University for Sustainable Development Eberswalde (HNE)
18	China	MoU between YUE and Taiwan Shin Kong Commercial Bank

International Profile: Facts & Figures

- Top 3 international collaborations (Universities, Countries, Activities)
 1. Eberswalde University, Germany: Quality Assurance Structure & Enhancement (QASTE)
 2. Research Institutes, ASEAN+6 countries: Economic Research Institute for ASEAN & East Asia (ERIA)
 3. Kyung Hee University, KOREA: Korea-Myanmar Research Association (KOMYRA)
- Average number of incoming exchange/visiting students: 2 (Indonesia & Japan)
- Average number of incoming exchange/visiting professors: 3 (Germany & U.S)
- Average number of outgoing exchange students: 9 (Cambodia & Viet Nam for undergraduates & Germany & Japan for Post-graduates)
- Average number of outgoing exchange professors: ---

International Profile: Facts & Figures

- ▶ Number of International Educational Project: 8
- 1. Economic Research Institute for ASEAN and East ASIA (ERIA)
- 2. Korea Myanmar Research Association (KOMYRA)
- 3. Quality Assurance Structure and Enhancement (QASTE)
- 4. South East Asia Social Innovation Network (SEASIN)
- 5. Support for Higher Education in the ASEAN Region (SHARE)
- 6. Connecting Higher Education Institutions for a New leadership On National Education (CHINLONE)
- 7. Joint Revision & Development of Education and Training Activities Targeting Myanmar's Financial and Banking Sector Between GIZ & YUE
- 8. Joint Master Program for Social Innovation & Entrepreneurship (MSIE) between Eberswalde University for Sustainable Development (Germany), Royal University of Phnom Penh (Cambodia) & YUE

Internationalization: Actors

- ▶ Ministry of Education: Setting guidelines for internationalization
- ▶ University Senate: Setting internationalization policy of the University
- ▶ Rector: Approving international relations functions & activities
- ▶ Pro-rector: Overseeing internationalization activities
- ▶ IRO: Playing liaison role, assisting international relations of the departments, & promoting the University on regional & international fronts
- ▶ Departmental Heads & Delegates: Implementing respective internationalization projects

Internationalization: Goals & Priorities

Main Priorities:

- Capacity building for resource persons
- Developing curriculum and syllabus inline with international standard
- Increasing research collaboration and publication

Actions:

- Accreditation of AUN-QA
- Capacity building programs for both teachers and staff
- Upgrading the infrastructure and utilizing state-of-the-art technology
- Facilitating for the functions IRO Department

Internationalization: Goals & Priorities

Three other development goals:

- To enhance the university's capacity for internationalization in order to promote academic collaboration and research cooperation
- To redesign university governance and teaching and learning styles in line with the changing demand of labor market.
- To nurture socially responsible and competent economists & business leaders who possess integrated skills, knowledge, and experience with global vision and local commitment

Internationalization: Activities & Tools

- ▶ As a public university, YUE needs the approval of the Ministry of Education for all inbound students and both inbound and outbound academic staffs.
- ▶ YUE has the capacity to provide some accommodation arrangement (hostel & dormitory) for exchange students & academic staffs and office space and facilities for inbound teachers and researchers.
- ▶ Due to the limitation of budget allocated by the Ministry, the funding for exchange students, faculty members, and international projects has come from partner universities, academic institutions, and supporting international organizations.
- ▶ E.g.: JICA, JETRO, KOICA, DAAD, USAID, Erasmus+, & European Commission

International Dimension: Challenges

- Differences in academic calendar and credit system
- Limited resource person to convey lecture in English language
- Accreditation of international academic institutions (AUN-QA)
- Facilities and resource personnel for International Relations Office
- Limited financial resources for internationalization projects

Thank You for Your Attention



Q & A