

*Designing and managing international relations,
educational projects and mobility schemes in Asian
Universities (TOOLKIT)*

Erasmus+ KA102

YEZIN AGRICULTURAL UNIVERSITY

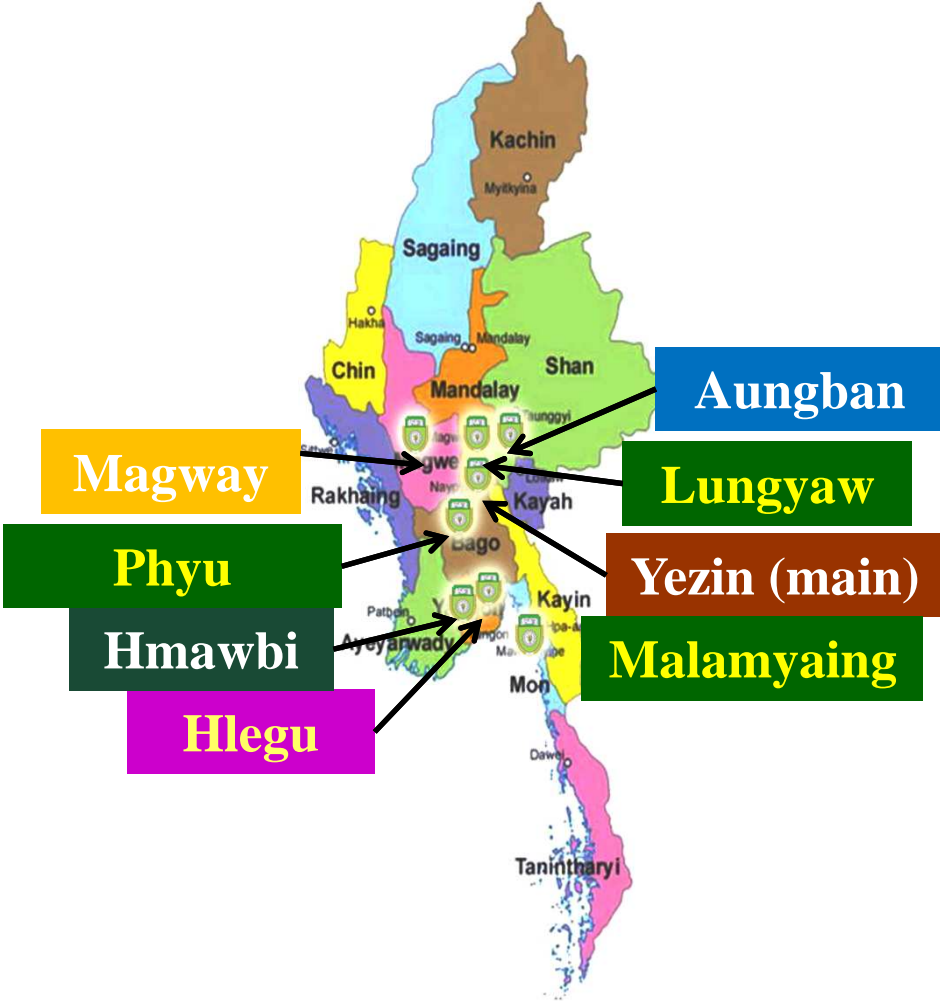
(YAU)

Soe Soe Thein
Pro-rector





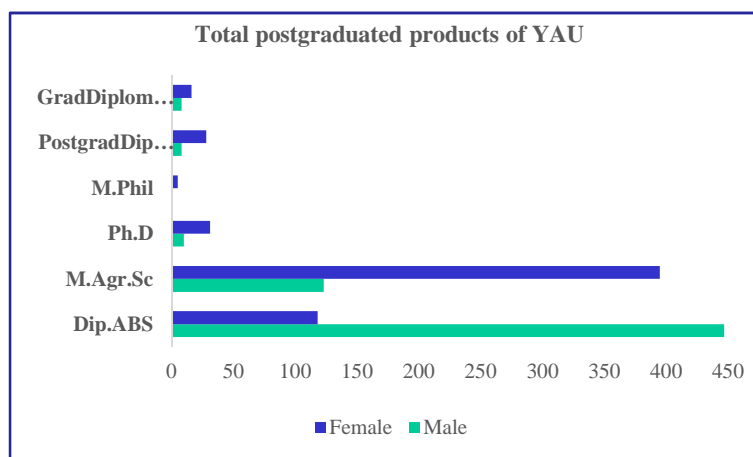
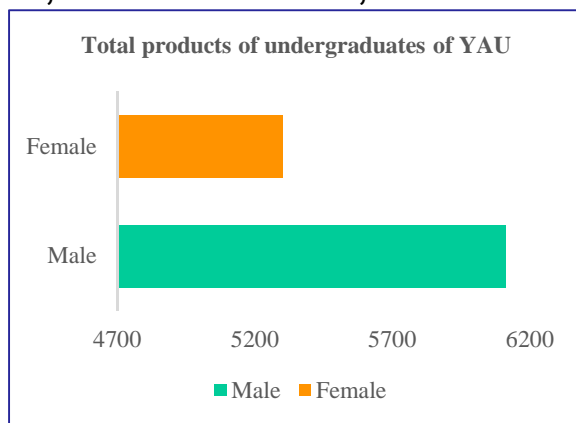
Out-reached campuses



YEZIN AGRICULTURAL UNIVERSITY



- YEZIN, ZEYARTHIRI, NAYPYITAW, MYANMAR



Faculty member

Position	Male	Female	Total
Rector		1	1
Pro-rector (Academic)		1	1
Pro-rector (Admin)			0
Head (Admin)	1		1
Head (Training)		1	1
Professor	6	18	24
Associate Professor	3	13	16
Lecturer	14	46	60
Assistant Lecturer	12	55	67
Demonstrator	7	19	26
Total	43	154	197

✓ No distance learning program!!!

Major Departments

Sr. Departments

- 1 Department of Agronomy
 - 2 Department of Plant Breeding, Physiology and Ecology
 - 3 Department of Agricultural Biotechnology
 - 4 Department of Horticulture
 - 5 Department of Animal Science
 - 6 Department of Agricultural Engineering
 - 7 Department of Food Science
 - 8 Department of Soil and Water Science
 - 9 Department of Plant Pathology
 - 10 Department of Entomology & Zoology
 - 11 Department of Agricultural Microbiology
 - 12 Department of Agricultural Economics
 - 13 Department of Agricultural Extension
-

Basic Departments

Sr. Departments

- 1 Department of English
 - 2 Department of Myanmar
 - 3 Department of Physics
 - 4 Department of Mathematics
-

Advanced Centre for Agricultural Research and Education (ACARE)

Sr. Departments

- 1 Department of Post-harvest
 - 2 Department of New Genetics
 - 3 Department of Knowledge & Participatory
-

DEGREE PROGRAMS

No.	DEGREE	RESIDENCY (YEARS)	NO. OF STUDY PROGRAM
1	B.Agr.Sc.	5	7 (13)
2	Postgraduate Dip.Agr.Sc.	1.5	7
3	M.Agr.Sc.	3	7
4	Ph.D.	3-5	7
5	M. Phil.	2	7

INTERNATIONAL PROFILE:

Number of partner Universities (33 Universities)

Country	No. of University
Japan	8
China	4
Germany	4
Korea	4(SNU, KNU, SungKyunKwan Univ.)
Thailand	3 (KMUTT, Kasetsart Univ., Maejo Univ.)
USA	3 (Michigan state Univ., Univ. of Kentucky, Cornell Univ.)
Philippines	2 (UPLP, IRRI)
Indonesia	1(Universits Gadjah Mada)
Switzerland	1 (HAFL, Burn University)
France	1(Montpellier SupAgro)
Netherlands	1(Wageningen University and Research)
Finland	1 (University of Helsinki)

COMPLETED AND ONGOING PROJECTS IN YAU FUNDED BY EUROPEAN COMMISSION

No.	Name of Project	Coordinator	Duration
1	Staff and Student Mobility program (Lotus+)	Uppsala, Sweden	2016-2018
2	Network for Universities and enterprises for training in food in South East Asia (NutriSEA)	U Gent, Belgium	2016-2018
3	Nodes of Excellence in (SEA) Universities through spatial data (NEXUS)	Vrije Universiteit Brussel, Belgium	2018-2020
4	Connection Higher Education Institution for a New Leadership On National Education (CHINLONE)	University of Bologna, Italy	2018-2020
5	Designing and managing international relations, educational projects and mobility schemes in Asian Universities (TOOLKIT)	University of Bologna, Italy	2019- 2021

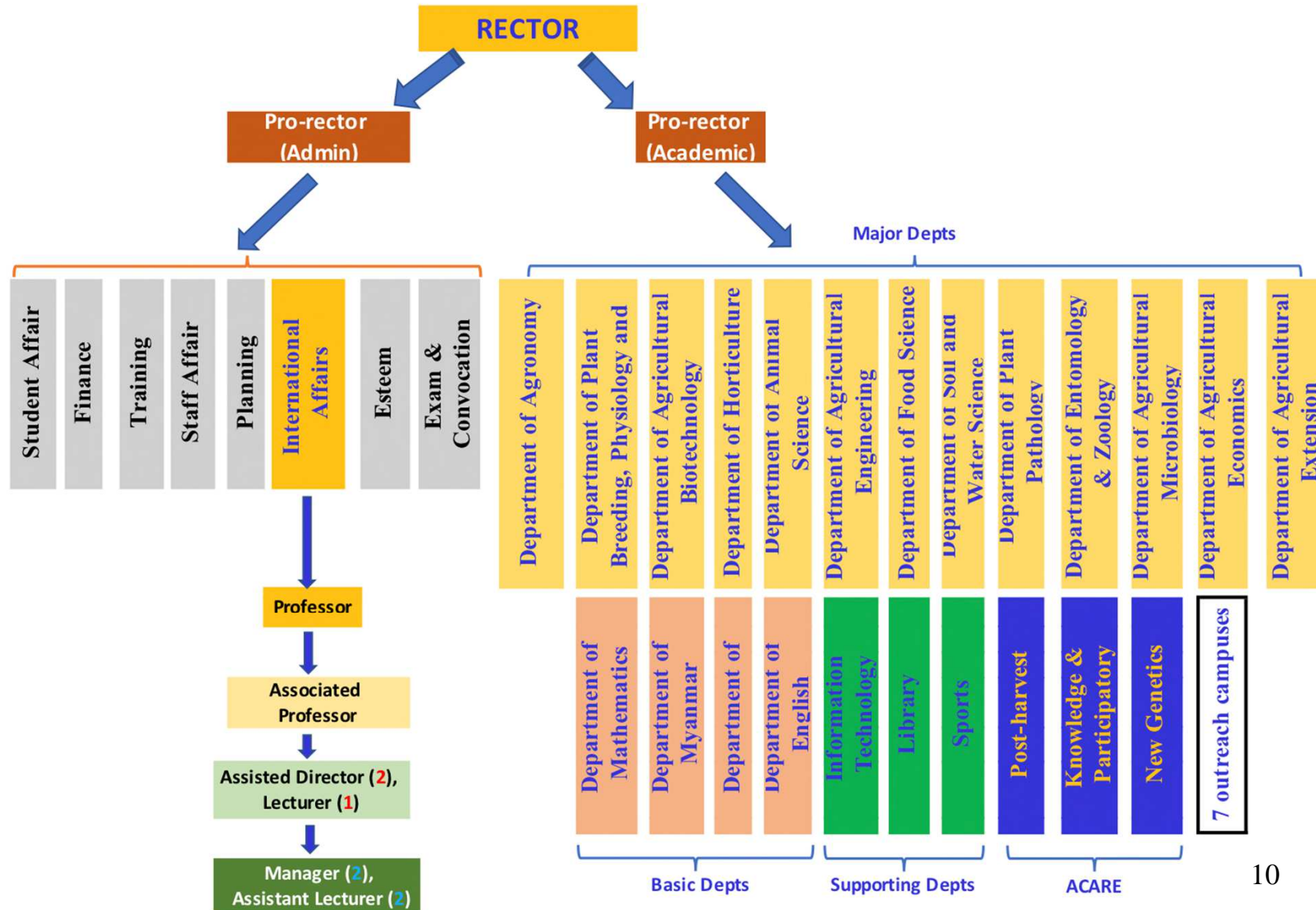
PROJECTS APPLIED TO EUROPEAN COMMISSION THIS YEAR

no.	Name of the Project	Coordinator Univ.
1	Field Training in Agricultural Post-graduate Education (Field TAPE).	Montpellier SupAgro, France

PROJECTS SUPPORTED BY DIFFERENT ORGANIZATIONS

No.	Name of the Project	Organization	Duration
1	Sustainable cropland and forest management in priority agro-ecosystems of Myanmar	FAO	2017-2021 (5 years)
2	ACARE (Advance Center for Agricultural Research and Education)	IARI, India	2018-2022 (5 years)
3	Strengthening human development institution in Agriculture (TCP)	JICA, Japan	2015-2020 (5 years)
4	Joint Researches with Australian Universities under (4) projects	ACIAR, Australia	2013-until now
5	Analysis of the global pathway and risk of highly pathogenic plant viruses and insect vectors from tropical and subtropical countries”	Animal and Plant Quarantine Agency, Korea	2017-2021 (5 years)
6	Member of Himalayan Universities Consortium (Curriculum Development on Mountain Agriculture)	ICIMOD	2017
7	Members of ASEAN Agricultural Universities Network (AAUN)	Maejo University, Thailand	2018

INTERNATIONALIZATION: ACTORS



INTERNATIONALIZATION: GOALS AND PRIORITIES

Vision: To be a globally engaged Agricultural University

Values: YAU values cross-tradition and technological innovation in sustainable agricultural development without harming natural environment

Objective 1

To enhance internationalization of curriculum and mobility

Objective 2

To promote and act on global concern regarding agricultural innovation and environmental conservation

Objective 3

To acquire diverse yet adaptable international practices and adopt it for regional improvement

INTERNATIONALIZATION: ACTIVITIES AND TOOLS

- Long term training program for teaching staff

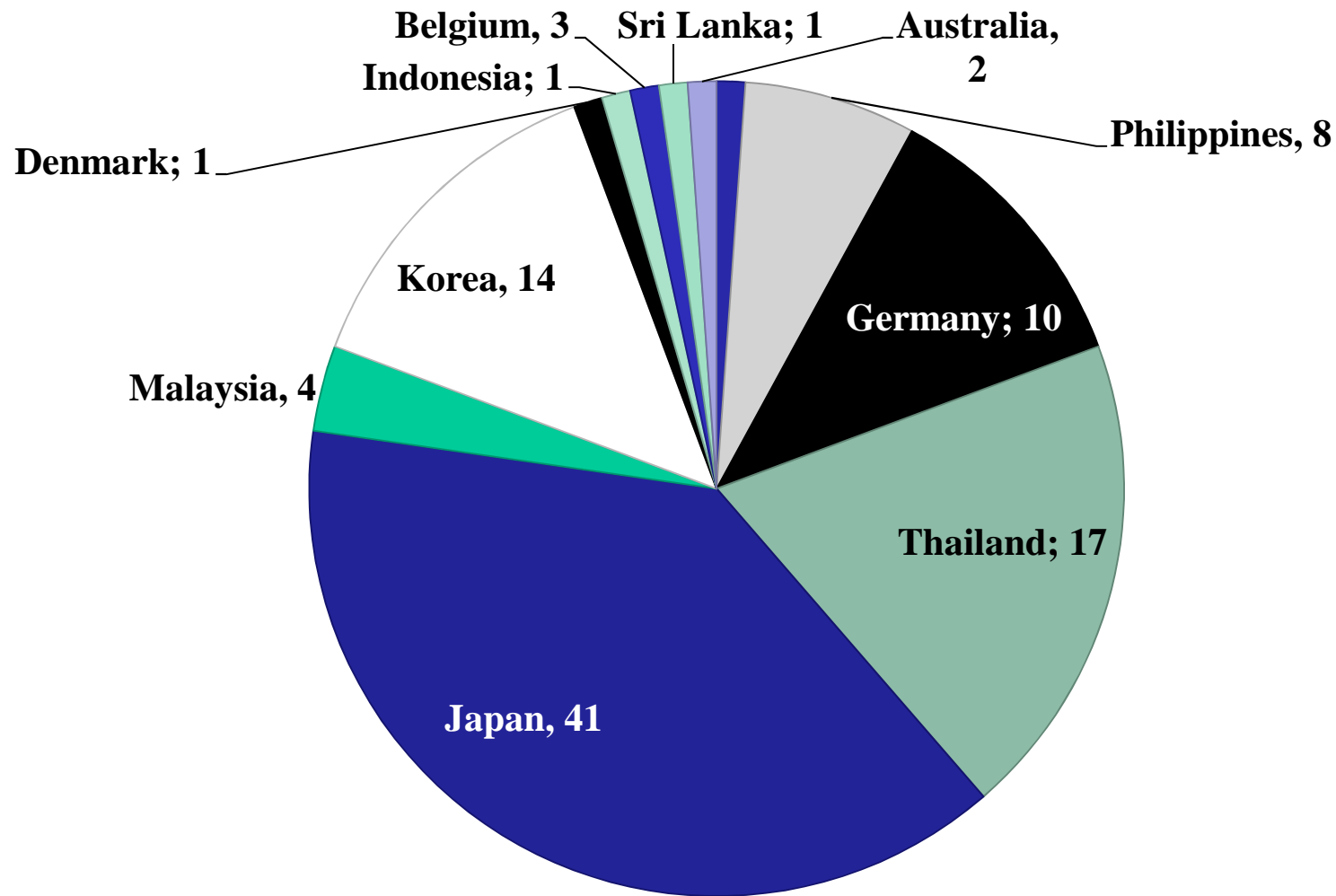


Fig. Numbers of staff whom sent to different universities

INTERNATIONALIZATION: ACTIVITIES AND TOOLS (contd.)

International activities for the students

- Students **internship program** at University of Kentucky, USA (4 months, started in 2018)
- **Summer camp** program at Gadjah Mada University, Indonesia (for one month)
- **Japan-Asia Youth exchange program in Science** program(Sakura Science program) at Chiba University and Utsunomiya University in Japan (for 10 days)
- **Students exchange** program at Yunnan Agricultural university, China (for 10 days) (started in 2017)
- **International Student summit** (ISS) program at Tokyo University of Agriculture, Japan (for 10 days) (started in 2017)
- **Undergraduate and postgraduate study program** at ₁₃ Tokyo University of Agriculture, Japan (4 years / 2 years)

INTERNATIONAL DIMENSION: CHALLENGES

Obstacles/ Challenges

- **Governmental Policy** for international collaborative activities such as joint research, signing agreement between two institution, staff mobility programs. (taking the time to get the permission from our Government due to many steps)
- **Different academic system**, Up to last year, our students could not earn the credits that they have earned from partner universities due to different education system (e.g. We are using academic year system and students need to re-register their courses after they have come back from any exchange program)
- **Limited financial resources**, Joint collaborative activities, such as joint research, Joint workshop, sending staff and student for long term Degree programs, are mainly depended on international funding program due to limited budget from Government.
- **Insufficient staff numbers** for International affairs office to manage the all international activities (not only number staff but also skilled person)
- **Limited infrastructure and teaching staff** for receiving the foreign students

YAU



Thank You